

SWING CHECK VALVE PN 25

FIGURE 40.10.1

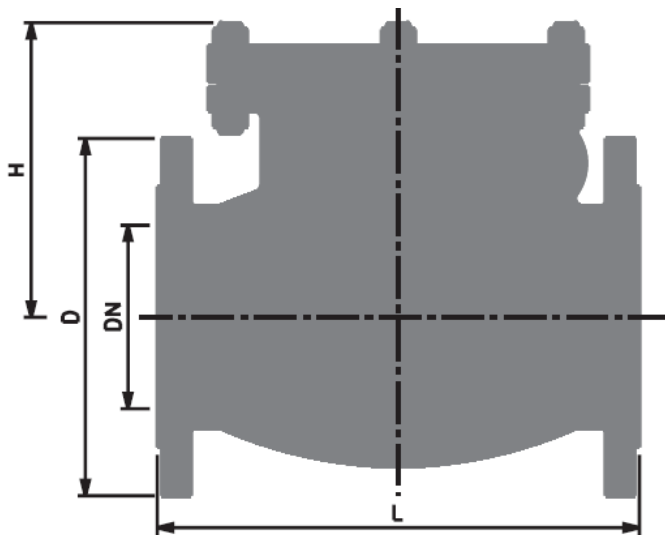
CIV Check 25



Construction :

Carbon steel , body , cover and disc. Stainless steel sealing seats. Graphite + inox gasket.

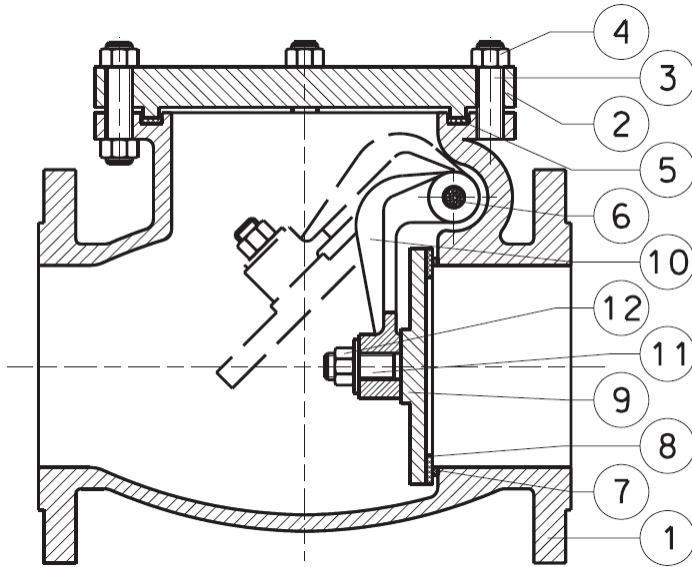
Connection flanges dressed and drilled according to EN 1092-1 PN 25 with raised face.



DN	D	L	H	kg
50	165	200	160	15
65	185	240	170	24
80	200	260	175	28
100	235	300	195	38
125	270	350	210	58
150	300	400	240	96
200	360	500	280	131
250	425	600	320	212
300	485	700	365	273
350	555	800	425	440
400	620	900	440	465

CIV Check 25

List Materials



	Part Name	Material
1	Body	GP 240 GH+N STEEL
2	Cover	CARBON STEEL
2	Tie-rod	STEEL
3	Nut	STEEL
3	Gasket	GRAPHITE+ST.STEEL
4	Pin	STAINLESS STEEL
5	Body seat	STAINLESS STEEL
6	Disc seat	STAINLESS STEEL
7	Disc	CARBON STEEL
8	Hinge	CARBON STEEL
9	Stud screw	STEEL
12	Nut	STEEL

SWING CHECK VALVE PN 40

FIGURE 40.10.2

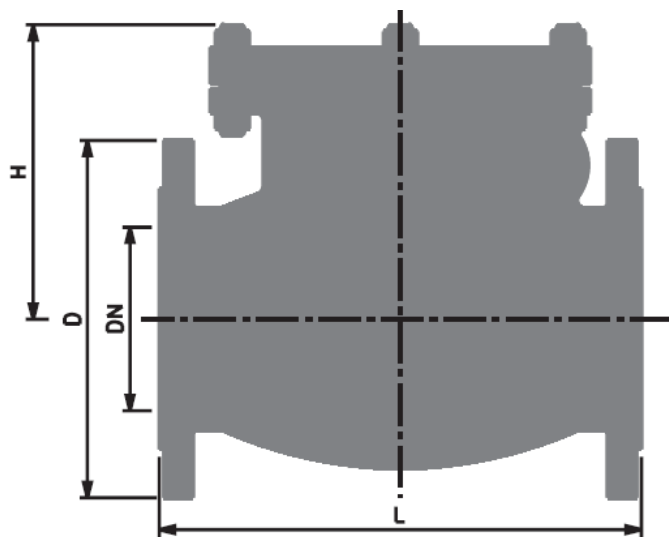
CIV Check 40



Construction :

Carbon steel , body , cover and disc. Stainless steel sealing seats. Graphite + inox gasket.

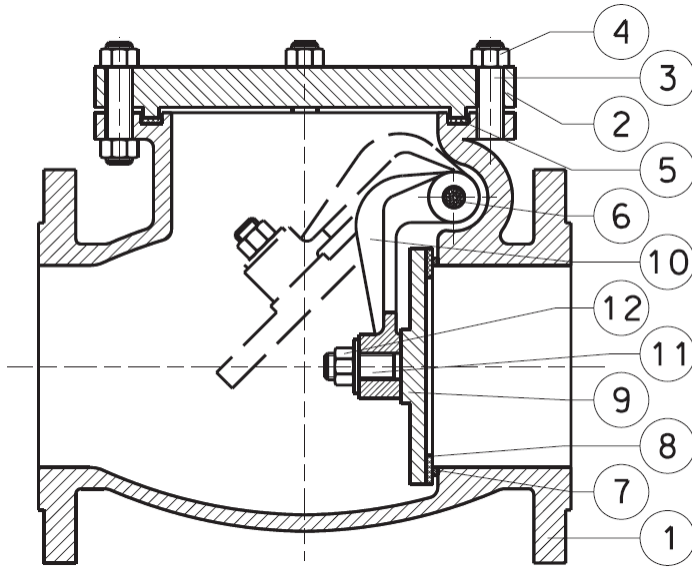
Connection flanges dressed and drilled according to EN 1092-1 PN 40 with raised face.



DN	D	L	H	kg
50	165	230	160	20
80	200	310	175	33
100	235	350	215	46
125	270	400	230	65
150	300	480	240	95
200	375	600	290	165
250	450	730	320	230
300	515	850	395	380
350	580	980	435	500
400	660	1100	450	580

CIV Check 40

List Materials



	Part Name	Material
1	Body	GP 240 GH+N STEEL
2	Cover	CARBON STEEL
2	Tie-rod	STEEL
3	Nut	STEEL
3	Gasket	GRAPHITE+ST.STEEL
4	Pin	STAINLESS STEEL
5	Body seat	STAINLESS STEEL
6	Disc seat	STAINLESS STEEL
7	Disc	CARBON STEEL
8	Hinge	CARBON STEEL
9	Stud screw	STEEL
12	Nut	STEEL

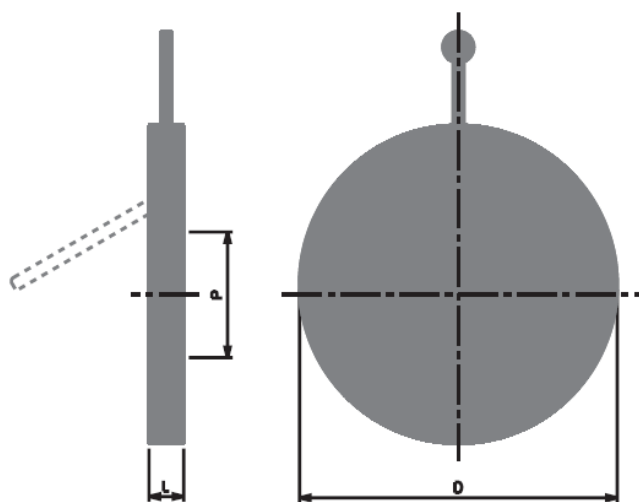
CIV Check Wafer



Construction :

Carbon steel body , lifting eye bolt. Stainless steel clapet. BUNA or VITON O-rings. Suitable

To be assemble between flanges PN6/10/16 and Ansi Class 150.



DN	D	L	P	kg
40	94	14	19	0.65
50	109	14	25	1
65	129	14	38	1.3
80	144	14	46	1.6
100	164	14	71	2
125	195	16	95	3
150	221	19	114	5
200	276	29	140	11
250	331	32	188	15
300	386	38	216	25

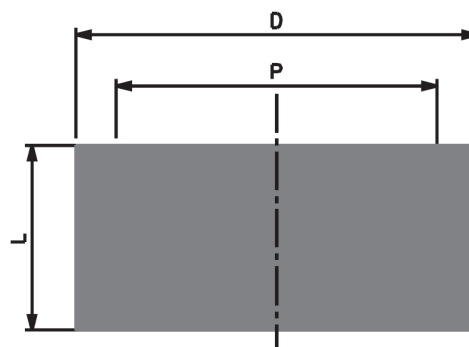
CIV Check Wafer Double



Construction :

Body ductile Iron ; Body and plate ; Wafer type ;

Design according ISO 3202



Valves size	D			P	L	Kg	
	DN	PN10	PN16				ANSI 150
50		109		105	40	43	2
65		129		124	60	46	2.8
80		144		137	70	64	4
100		164		175	88	64	5
125		194		197	115	70	6.5
150		220		222	134	76	9.5
200		275		279	182	89	15.5
250		330		340	220	114	29
300		380		410	260	114	48
350	440		446	451	298	127	58
400	491		498	514	350	140	76
450	539	55		549	385	152	85
500	596	620		606	438	152	107
600	698	737		718	538	178	165

Data given this catalogue may be changed without notice

On request CIV supply valves up to 72" in SS, CS, CI, DI, Monel, Inconel.

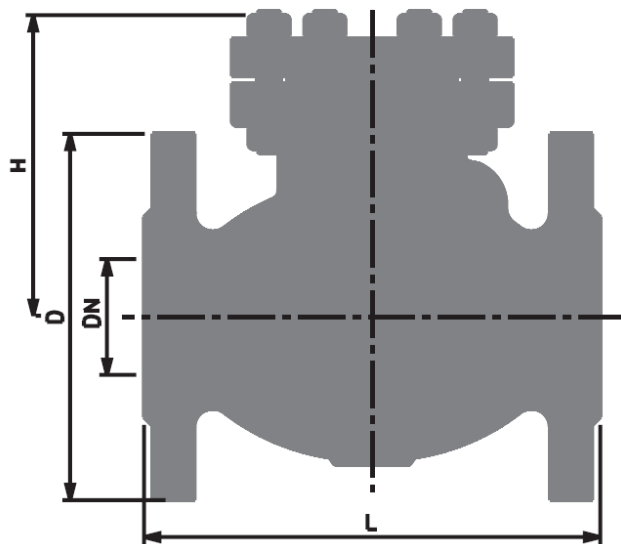
CIV Check 150



Construction :

Carbon steel body and cover . Stainless steel seat and swing until 6". Asbestos free gaskets.

Connection flangeds dressed and drilled according to ANSI B.16.5 150 RF ; RTJ ; BW.



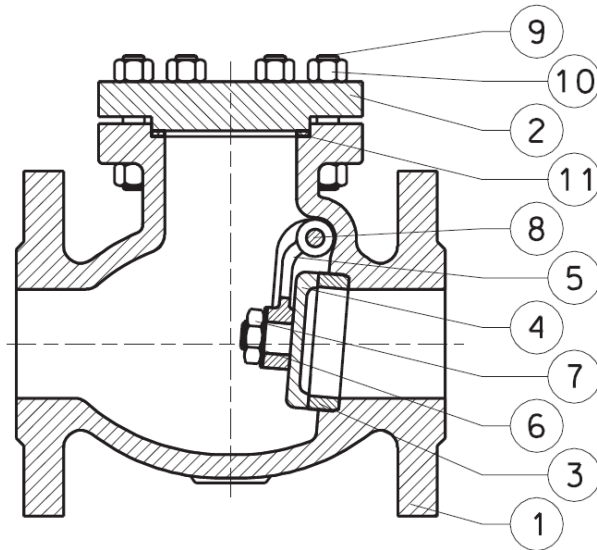
SIZE	D	L			H	kg
		BW	RTJ	RF		
2"	152	203	216	203	159	17
2".1/2	178	216	229	216	168	25
3"	191	241	254	241	181	29
4"	229	292	305	292	203	50
6"	279	356	368	356	276	85
8"	343	495	508	495	330	150
10"	406	622	635	622	381	240
12"	483	699	711	699	410	350
14"	533	787	800	787	524	460
16"	597	864	876	864	572	495

Data given this catalogue may be changed without notice

On request CIV supply valves up to 72" in SS, CS , CI , DI , Monel , Inconel.

CIV Check 150

List Materials



	Part Name	Material
1	Body	ASTM A216 WCB STEEL
2	Cover	ASTM A216 WCB STEEL
3	Seat	STAINLESS STEEL
3	Swing	STAINLESS STEEL
4	Hinge	CARBON STEEL
4	Washer	STAINLESS STEEL
5	Nut	STAINLESS STEEL
6	Pin	STAINLESS STEEL
7	Studs	STEEL
8	Nuts	STEEL
9	Gasket	ASBESTOS FREE

Data given this catalogue may be changed without notice

On request CIV supply valves up to 72" in SS, CS , CI , DI , Monel , Inconel.

SWING CHECK VALVE CLASS 300

FIGURE 40.20.2

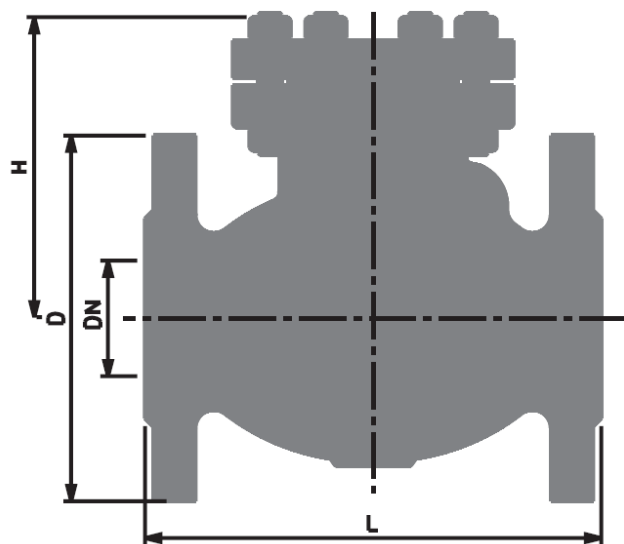
CIV Check 300



Construction :

Carbon steel body and cover . Stainless steel seat and swing until 6". Asbestos free gaskets.

Connection flanged dressed and drilled according to ANSI B.16.5 300 RF ; RTJ ; BW.



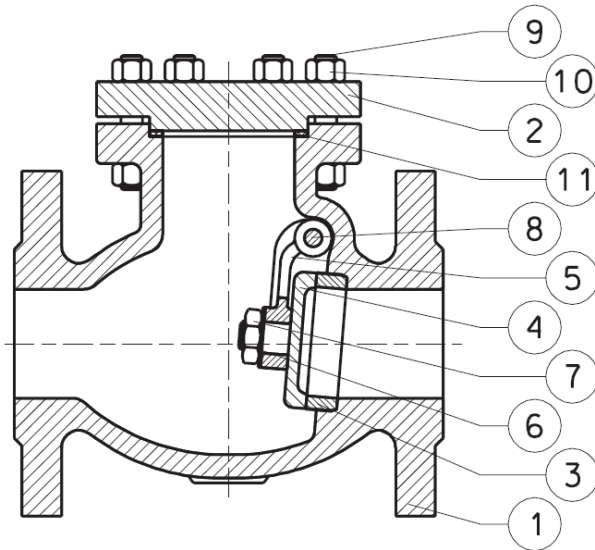
SIZE	D	L			H	kg
		BW	RTJ	RF		
2"	165	267	283	267	175	28
2".1/2	191	292	308	292	181	33
3"	210	318	333	318	191	45
4"	254	356	371	356	241	70
6"	318	445	460	445	305	150
8"	381	533	549	533	362	230
10"	445	622	638	622	425	390
12"	521	711	727	711	451	520
14"	584	838	854	838	549	710

Data given this catalogue may be changed without notice

On request CIV supply valves up to 72" in SS, CS , CI , DI , Monel , Inconel.

CIV Check 300

List Materials



	Part Name	Material
1	Body	ASTM A216 WCB STEEL
2	Cover	ASTM A216 WCB STEEL
3	Seat	STAINLESS STEEL
3	Swing	STAINLESS STEEL
4	Hinge	CARBON STEEL
4	Washer	STAINLESS STEEL
5	Nut	STAINLESS STEEL
6	Pin	STAINLESS STEEL
7	Studs	STEEL
8	Nuts	STEEL
9	Gasket	ASBESTOS FREE

Data given this catalogue may be changed without notice

On request CIV supply valves up to 72" in SS, CS , CI , DI , Monel , Inconel.

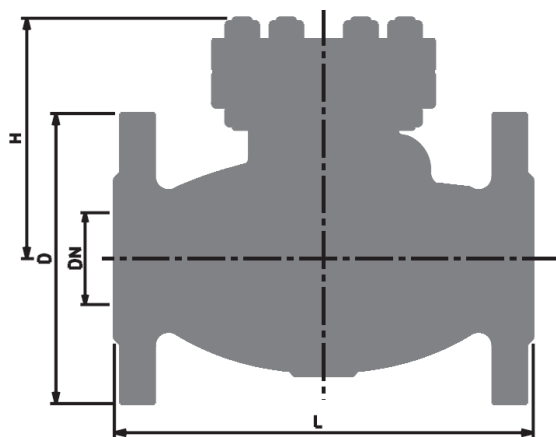
CIV Check 600



Construction :

Carbon steel body and cover . Stainless steel seat and swing until 6". Asbestos free gaskets.

Connection flangeds dressed and drilled according to ANSI B.16.5 600 RF ; RTJ ; BW.



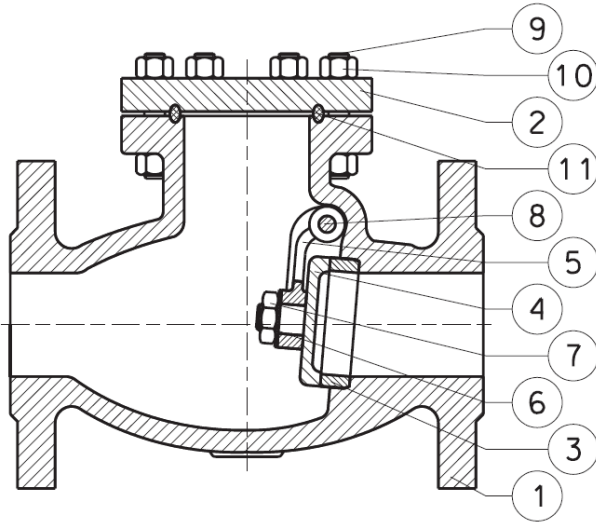
SIZE	D	L			H	kg
		BW	RTJ	RF		
2"	165	292	295	292	203	32
2".1/2	191	330	333	330	219	42
3"	210	356	359	356	238	60
4"	273	432	435	432	279	110
6"	356	559	562	559	381	220
8"	419	660	664	660	438	390
10"	508	787	791	787	527	630
12"	559	838	841	838	641	870

Data given this catalogue may be changed without notice

On request CIV supply valves up to 72" in SS, CS , CI , DI , Monel , Inconel.

CIV Check 600

List Materials



	Part Name	Material
1	Body	ASTM A216 WCB STEEL
2	Cover	ASTM A216 WCB STEEL
3	Seat	STAINLESS STEEL
3	Swing	STAINLESS STEEL
4	Hinge	CARBON STEEL
4	Washer	STAINLESS STEEL
5	Nut	STAINLESS STEEL
6	Pin	STAINLESS STEEL
7	Studs	STEEL
8	Nuts	STEEL
9	Gasket	METALLIC

Data given this catalogue may be changed without notice

On request CIV supply valves up to 72" in SS, CS, CI, DI, Monel, Inconel.